

Re:Scape

Rethink. Resolve. Respond.
Design.





Inner City Architectural and Contemporary

Seven Hills

PROJECT BRIEF

Upon meeting this client we were faced with tight, steep access with very minimal room to work with. The brief was to deliver a very private tropical garden and bold entry that had a connected outdoor living space and pool that blended the architecture of the home into the garden. Also there were specific requests about the importance of clean details, functionality and quality natural material choices. This was a great challenge for the team.

KEY FEATURES

- **Structural Features**

- Private plunge Pool using local Ironbark decking surrounds with wrapped decking into the pool for a seamless feel.
- Custom Aluminium gate house and block infills, the profile we designed allowed the eastern breeze to flow through while still creating privacy from people walking by.

- **Planting**

- The use of a natural screening of gracillis bamboo (even thou it was known to have maintenance) This was to create a fast and tall privacy solution as the planting complemented the theme.
- The planting had to be perfect to complete the look, we chose spreading succulents to soften the hard stones, Creeping Fig to act as a green wall over the big white rendered walls through the entry way.

- **Key Details**

- Striking lines in the cantilevered decking seats.
- Natural quality materials such as Basalt Slabs, Basalt Stone Edging, Sir Grange Lawn.



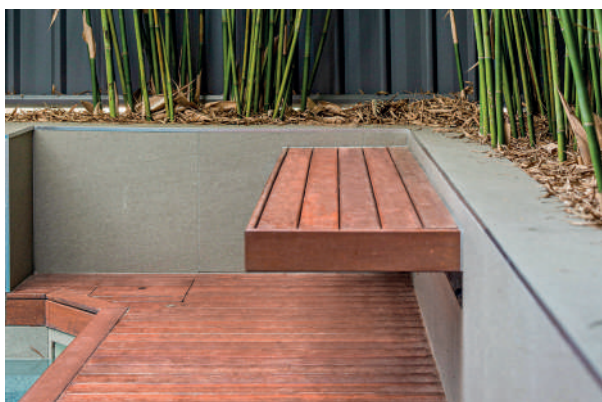
PRIVATE PLUNGE POOL

When designing with minimal space, every measurement is important. We had to consider many elements in this area. We had to look at the balance and ratios on all heights, levels and transitions to achieve a functional yet flowing result.



CUSTOM ENTRY WAY

Large natural basalt stone slabs were used to create the transition from the front door to the custom designed gate house. Strong lines in landscape design lead your eyes.




CANTILEVERED SEATING

To create a modern and stylish effect, this floating seat creates an eye catching statement on its own.



“A homes entry requires a balanced landscape design”

A photograph of a modern outdoor swimming pool. The pool has a light-colored tiled deck and a glass safety fence. Two lounge chairs and two small tables are on the deck. A green lawn is visible behind the pool. The background shows a white house and trees. The sky is blue with some clouds. In the bottom left corner, there are three overlapping circles in shades of blue and grey.

**"A balanced space that
will suit the extended
family functions"**

Forever home

Ascot

PROJECT BRIEF

This was interesting, originally we arrived to provide a design solution around the back fence to replace some hideous bamboo and replace with some new planting. As I listened to their needs, I soon discovered these client had fell out of love with their garden being an impracticable space with a giant 1940's pool smack bang in the middle taking up all the pace. We discussed our services and presented our 3D design services as a way of communicating how that would look. I also suggested we could create a fresh look, through the design process we were able to show the hidden opportunity that was awaiting to be discovered. Once we presented they were taken back with the amount of wish list items ticked and could not wait to start. This was a great project from start to end.

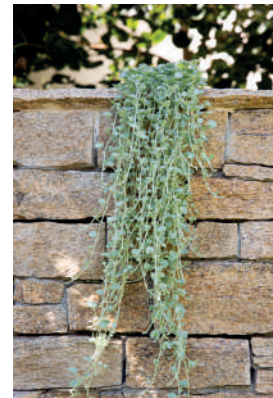
KEY FEATURES

- **Structural Features**
 - Soft green lush lawn area for the grandchildren to enjoy and area for the pets to sun bake.
- **Planting**
 - To screen out the large neighbouring house we used a Hibiscus Tiliaceus Rubra (Red Beach Hibiscus) This was a great choice being a fast growing, lower maintenance option for being next to the pool. Within 18 months this was already a completely private backyard.
- **Key Details**
 - We used a seamless drainage system to provide a high end feel even in the smallest details. The custom coping we had fabricated to drop into the pool to create a seamless flowing effect from surround into the water, additionally we clad the garden edges in matching tiles to keep the material consistent throughout the design.



RIGHT ASPECT

When you get the right soil, watering and sun aspect, you get results like this beautiful Fiddle Leaf Fig (Ficus Lyrata).



SOFTEN THE STONE

We like to balance Bold surfaces with cascading plants, This Dichondra 'Silver Falls' (Dichondra argentea 'Silver Falls') does a great job softening the stone clad walling.



PLANTS AND POOLS

Ensuring your not creating a weekend job is important, there are only a few plants that do well to provide low maintenance screening, this is why we spend time to research the best choices for each project. The end result.... well you decide.



Clean and contemporary

Hawthorne

PROJECT BRIEF

This yard was super disconnected when we arrived, our clients wanted a space for the grandchildren to play and a space for the pet. There was issues with flow from the outdoor area to the pool space with many fences in the way. We designed this space by pushing all elements to the boundary which opened up so much hidden space.

KEY FEATURES

- **Structural Features**

- We lifted the pool and created custom coping to clean up all the transitions between the areas. The custom red ironbark fencing provided a natural screening over time will grey off and complete the look.

- **Planting**

- We decided on an elegant planting style, using flowers and foliage of whites and greys with a touch of deep green foliage shown in the Buxus hedges and star jasmine creeper. The plumeria pudica in the white custom artisan style pots are just eye catching in their bloom.
- We also added some dwarf olives into the raised bed as the client requested this tree. Visiting the project 12 months later it just looked amazing to see everything in full bloom.

- **Key Details**

- Timber grain look porcelain tiles, less maintenance than natural stone and cooler under foot.
- Custom made contemporary pots.
- Hidden LED strip lighting under the pool coping, remote switched.



YES THE LAWN IS REAL

When the soil is right, the whole garden benefits. The client was thinking about artificial turf but really wasn't keen on the feel. We suggested a bit more effort on the preparation and we can have the real lawn finish perfectly. Most people we show this picture to think its fake turf haha.



STAINLESS TRELLIS

Creating a greenwall was fundamental to softening the timber fence. This stainless steel wiring made for the perfect high end finish we were looking for.



ONE LEVEL

Having steps everywhere was driving our client mad. Not to mention it was becoming dangerous. We lifted and shift levels to get a seamless connection around the whole yard.



**"Whites, greens and grey.
The secret palette in
clean design."**



"A fire pit area, reading area, spa, BBQ, deck...
All in this tiny backyard....HOW!"

Secret garden

Wakerley

PROJECT BRIEF

When walking into this space, it was just harsh and not friendly. The clients wanted multiple zones for entertaining and year round areas to sit, read, have a fire and just chill out. We took the space back to a blank canvas and started from scratch. This included a new spa, built in BBQ, deck and outdoor living space.

KEY FEATURES

- **Structural Features**
 - Custom spa with built in water fall, sunken to connect eye level with people sitting on the deck.
 - Custom Built in BBQ with cabinetry and wrap around bar.
 - Vertical railway bollards created in a circle effect to create interest
- **Planting**
 - A use of mass planted Heliconia Hot Rio Nights was used to create the lush green oasis feel. This existing frangapani was kept and highlighted as a main feature near the BBQ. In general this is a fairly low maintenance planting option not requiring constant attention.
- **Key Details**
 - Custom Spa unit with built in ice boxes either side to hold your drinks, the ultimate night out.
 - Custom designed and built BBQ and bar.
 - Quality ironbark low line decking over an existing partial slab to have a internal floor height.
 - High quality materials , being a small area you can splurge on the best and it won't break the bank.



VERTICAL BOLLARDS

Using a vertical bollard to define the garden, simply creates interest and definition. It is a subtle effect but looks stunning.



TOTAL LUXURY

Watching TV, while relaxing in the hot tub. This was what our clients were looking for. We made this spa area multi purposed housing ice buckets, a spill blade water feature, hidden access panels to the motor. For something simple there is a fair amount going on!



READING AREA

Finding a little nook area in the garden to nestle into a good book was required. We added this space right near the water feature for total serenity.

Hendra

PROJECT BRIEF

I remember meeting Rob for the first time, he showed me his Jungle and was really sick of the creepy crawlies. He wanted a pool, visually beautiful, super functional for his family all year round. It had to be warm in winter, be able to clean itself to save him time and maintenance. We had to really do some prep work on this one to get the jungle under control first, just so we could see what was going on. There was a mature avocado tree hidden behind some vines we decided to leave and work around. After a good clean up we could get some proper levels and see what was going on. Then the design challenge begun!

KEY FEATURES

- **Structural Features**
 - Private, self cleaning pool with built in raised garden bed with spill LED water feature, rebated bench seating with blower jets for a good leg massage.
 - Custom steel trellis to house the jasmine vine.
 - Reading nook with raised hardwood decking in rear corner, over looking the garden.
- **Planting**
 - A combination of succulents and formal planting was used to complete the look of this garden. The highlighting avocado tree created a established focal point within the garden.
 - Potted plants of fruits and herbs where a client addition to ensure it was all perfect.
- **Key Details**
 - French pattern natural travertine tiles, filled and honed then sealed.
 - Very high detail on concrete placement to reduce cuts in tiles to retain full pattern throughout project.
 - Seamless fully flameless glass to have uninterrupted views in garden.



LIGHTING

Entertaining at night is so enjoyable on those balmy summer days. We always advise garden lighting to ensure you can enjoy the garden longer. Well placed lighting transforms areas and sets an ambiance when relaxing outdoors. There is hidden strip lighting throughout this garden. See if you can spot them!



POOL COLOUR

Just as important as the pool is the colour, mess up the colours and it can impact the whole look. We went with a light aqua shade through the day and a deeper blue at night. This pool is personal favourite of mine.



ADDING VALUE

Some clients have concerns with over capitalizing on their landscaping. Our response is simply a great design can be the best investment in the long run. People will pay more for a problem free backyard rather than something that has issues. A good design will create a great balance of design and budget to ensure the best outcome.



**"A formal finish for
a formal home"**



“Let’s bring a resort
to our home”

Resort style living

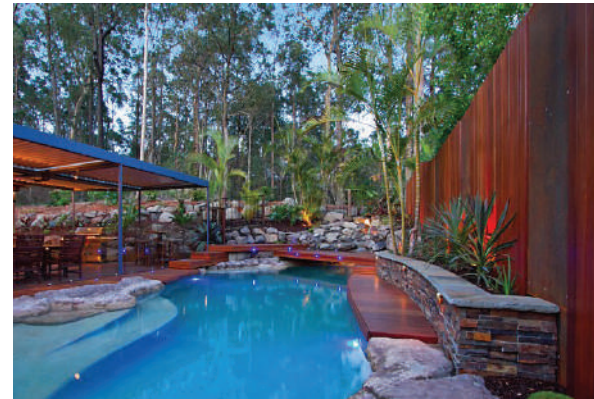
Chapel Hill

PROJECT BRIEF

This was really a story, I arrived and met Sue. She originally phoned for me to discuss some privacy screening against the pool as the neighbour kept staring at her swimming. After a bit more of a chat, Sue mentioned she was really wanting to revamp the pool area also. I mentioned the design service we offer with 3d and together we created a resort style backyard. This concept blew her away as she did not know this was even possible. A few weeks later, construction began!

KEY FEATURES

- **Structural Features**
 - Custom boundary screening with Corten panel infills, Fly over pool decking with reinstated basalt boulder waterfall that recirculated back into the pool. Curved and interesting decking throughout.
- **Planting**
 - As this project backed onto a reserve, we opted with a more tropical feel adjacent the pool and blended into a more native theme toward the rear of the waterfall. Additionally, we worked around some existing plants to leave a more established look.
- **Key Details**
 - Custom decking landings.
 - Curved raised bed tiled in Eco Outdoor Stone Clad Tile.
 - Seamless waterfall transition that flows under the decking.



AGED LANDSCAPING

The great part about landscaping is that it is a long term investment. The more time goes on, the better it really should look. Sure it may need some maintenance, but it is all worth it when you come home to something this amazing.



RECYCLE

We love to recycle, reuse elements on the project, sometimes you can't however, being more sustainable is great as it's a fresh lease on life for some of these materials. Take these basalt boulders, we just cleaned them up, reset them and tidy the area up, this saved some much \$ and the end result..Stunning!



TIMBER AROUND A POOL

Timber around a pool is it a NO NO? Certainly not. You do need to ensure it is designed correctly. There are special products to use to ensure longevity, Personally I love how the timber just floats over the edge and covers the ugly old brick coping...oh wait....you didn't even know they were there did you! That's right, sometimes hiding old elements is a better way than replacing them. Better way to spend your \$.

City view, natural terracing

Holland Park

KEY FEATURES

- Natural sandstone boulders used for long term, maintenance free solution.
- Captured city views by lifting backyard and installing a usable decking space under the Jacaranda tree.
- We created a level lawn area for future little ones to play as previously was a rocky mountain side.
- Custom partially finished structure, we had this custom steel fabricated arbour made and in future when budget permitted the clients were going to clad in laser cut panelling.
- Native planting to stay in keeping with the surrounding suburb was key



TREE ROOTS

It is always advisable to design around the tree roots if you love your big tree's. We consulted our tree doctor on this project with the design proposed to ensure we created something that was not going to damage the tree. We opted for the decking as we could stagger the footings around the roots and allow water to still penetrate the ground.



TERRACING

Although quite a feat at times, creating usable space adds so much value. On this project we managed to gain city views, so now our client can watch the fireworks!

Boulders are a good solution for a long term solution. I guess the Egyptians were on to something!

“How many boulders does it take to get city views?”





Refurb or replace?

Carindale

PROJECT BRIEF

Paul was a man of great detail, together we discussed the feasibility of removing his existing pool and replacing it or simply refurbishing it. After a few concepts we saw the potential in using the existing pool as a base and recreating a new look by adding in some features. Although we had to skimp on the plant sizes to complete the structural design. The clients still received a complete solution.

KEY FEATURES

- **Structural Features**

- Re-configured pool with new features. Replaced old spa sections with a new water feature spillway and updated spa section.
- Granite tile surrounds and extended patio space.
- Removed old rotting decking and palms to make way for a new fire pit space and deeper garden and dense planting.

- **Planting**

- Although we had to get creative with the budget, we chose common tropical plants that were hardy and cost effective. It looks stunning only 12 months later now they matured.
- Some of the species included Alocasia, Heliconia, Randia Fitzalanii - native Gardenia and Bromelads.

- **Key Details**

- Connection from the outdoor patio area into the pool.
- Well positioned water-feature to appreciate from multiple angles within house and yard.
- Fire pit space for those winter nights!



BEFORE

The timber from the original deck was just rotten and actually very dangerous as the client had stuck their foot through many times which simply had to go! Plus the added palms were a maintenance nightmare!



SEEING THE TREE IN THE FOREST

When the creative streak is flowing a creative mind sees opportunity where others may not. We saw on this project a refurbished pool with a new lease of life will save the client \$ and look stunning!



FIRE PIT

We all know you can count the winter days on your hand in Brisbane. This is why it is great to have non permanent fire pit area this way it can be multi functional throughout the rest of the year and your not left staring at a fire bowl all summer long.



“Ricky, I just want privacy”



Usable, practical and modern

Murarrie

PROJECT BRIEF

The clients were great to deal with, after listening to their concerns we embarked on a funky design. They loved timber and their privacy! As they were chatting to me, I thought of the Chapel Hill Project and we took a drive over to Sues and showed them hers. They fell in love. Yes! With a few changes obviously. We had a big rendered wall and a Plumeria that had to stay and lots of drainage issues to fix. A lot of the work was in the foundations just as much as above the ground on this project.

KEY FEATURES

• Structural Features

- Large decking screen to block out the neighbours and shield some of the sun.
- Raised planters to assist in fixing the drainage and house the soil required to get the planting required.
- Ironbark decking pool storage box with gas struts (for weight).

• Planting

- The clients had a requirement of wanting natural screening Gracillis Bamboo (even though it was known to have maintenance) This was to create a fast and tall privacy solution as the planting complemented the theme. We also introduced some large Magnolia Trees as the client just always wanted Magnolias in her pool area. The planting is a little different than what we would choose. However this was their forever home and they knew what they wanted.

• Key Details

- Ironbark decking that seamlessly wrapped into the pool.
- Remote activated deck lighting and garden lights.



ENTRY

We completed the back, however the front looked a bit sad. The clients asked us to simply refresh the front at the end. We added in some matching plants, installed some screening to connect the backyard into the front and voilà complete!



ADVANCED TREE'S

The trick with big trees is they need big beds to grow in. Although this looks tiny in the picture, you can't see what is under the deck, there is a oversized planter bed with proper drainage, you need to get everything right when undergoing this process as one missed step and there goes a lot of \$\$



PLANTS NEAR THE POOL

It is important to know what and where you are planting. This way you can plan for the long term. This existing Obtusa was really in the wrong spot but the client was happy to keep it even though the leaves dropped into the pool. It wasn't a big deal. The established look was worth it for them.



Space for the whole family

Holland Park

PROJECT BRIEF

This young family recently purchased this house, there was no backyard or usable space under their house, just a slope of grass and some rotting attempted herb bed. The main focus was to create some entertaining areas, a kid friendly pool, herb garden and an large chill space.

KEY FEATURES

• Structural Features

- We installed new engineered beams under the house and removed around eight posts that closed the whole area off. This transformed the usable area and built a large deck for a large family.
- Swimming pool, this pool was challenging due to the access restrictions, we end up building concrete boundary walls with new fencing on top. This way we didn't require such large excavation into rock. This saved the client \$\$\$ and made it possible to invest into completing the front in the same project.

• Planting

- We needed to screen the neighbours, we chose a great variety of Lillypilly Resilience its hardy, less messy and pest resistant.
- As space was limited so was our garden beds, we opted for large leafy tall planting to give the illusion of scale.

• Key Details

- Open outdoor living by rethinking the structural elements of the house.
- Quality local hardwood to stand the harsh weather.
- Even in a tight and restricted site, ability to have a lawn space, home vege garden and pool.



FAMILY FUN

We try to make pools functional with a large bench for little ones learning to swim, yet a deep area for those bomb divers! A space has to be functional or its under used, we squeezed in an area for some sun lounges... just!



PAINTING

It is basically a non negotiable for us, if you have an existing timber fence, it will need to be painted... sorry. This completely changes the look of the backyard. Some favourites are colourbond Woodland Grey or Basalt.



MAINTENANCE

Everything outdoors will need some form of maintenance, eventually. We find using local sourced timbers and hardy timber can cope better than imported timber. Ironbark is one of our favourites, its naturally termite resistant and class 1 in durability. This means long lasting. Keep up the oil and you will have a long term investment.



French provisional inspiration

Tarragindi

PROJECT BRIEF

Jeff and Maria were avid jet setters and loved to travel the world. The brief was simple. Ricky, we found this letterbox in France and we want a yard to match. Literately it was just the house and dirt when we arrived. This was such a great design, we took the inspiration from the house and brought some details into the garden. We created a mini scale French provisional landscape. The details speak for themselves.

KEY FEATURES

- **Structural Features**

- Totally custom entry block and wrought iron look infills.
- Hand build pizza oven.
- Water fountain.

- **Planting**

- We went all out of the planting, the use of Lavender, Bougainvillea, Capital Pear Trees and Gardenias. It simply look stunning.

- **Key Details**

- Imported white/grey round feature gravel from a Melbourne quarry.
- Detailed entry with French imported fixings and hardware.
- Complete automation from lighting, intercom, irrigation, fountain this was all controlled by a phone.



FIRST IMPRESSION

You know the old saying, "We think this first impression just keeps lasting, the trees keep growing and everything just keeps thriving"



ARBOURS

Growing a vine over an arbour is such a beautiful way to soften hard structures. The colour contrast is just as stunning. The key is to get the soil, water and sunlight right.



SYMMETRY

There are many design techniques we use, one being the golden mean ratio. I encourage you to Google it. When applying this into a garden wow the effect is natural and beautiful balance and flow. The theory is easy to understand, the application a bit more tricky!

"Ricky, here's a letterbox, now bring a slice of France to our yard"



“Not just 1 home but 3!”



Not double trouble, but triple trouble!
Three architectural home designs

Almavale St, Carindale

PROJECT BRIEF

We were engaged by BIB Group, a building company that has an eye for detail, after chatting to Richard and Josh we soon discovered they were amazing builders but not so confident with landscape design. With this development they wanted to have a high end finish... on a budget.. It was great working with them, we arranged a great design to suit each home, whilst making it unique and not a run of the mill design. Mixed with their skill the end results are just fantastic. This is sure to get them well above asking price.

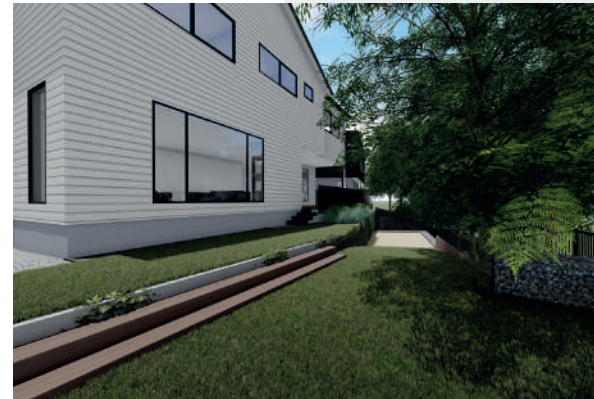
KEY FEATURES

- **Structural Features**
 - Bespoke entry wall with integrated letterbox.
 - Offset entry stairs.
- **Planting**
 - We created three unique styles for each home. I really was happy when Josh gave us the green light on a advanced planting budget. It really showed they saw value in the first impression plants can give.
- **Key Details**
 - Quality materials within the pool area, not a boring timber fence.
 - Large feature pots within the courtyard.
 - Advanced planting.



???

There are legal guidelines we need to stick to around building near houses with structures. The planning process tackles all the restrictions when it comes to these tight spaces. We work with certifiers to ensure early on a design can be achieved before finding out it may not be legal.



???

Concrete can be over the top for spaces not really used. We used decorative gravel and stepper pavers to wrap all the connections around the home. Just make sure to use weedmat and don't install under leafy trees as this can be a bit of a weed magnet as they drop and mulch down.



ONE LEVEL

Some turf simply won't make it without the right amount of sunlight. Empire Zoysia for us is a great all round lawn we design with. Otherwise, if you want to splurge. Sir Grange is the next level!

Re:Scape

Rethink. Resolve. Respond.
Design.

Connect with us:

07 3067 3337

hi@rescape.com.au

rescapedesign.com.au

 /rescapedesign

 /rescapedesign/

 /rescape_design/

 /company/rescapedesign/

